



FASCO MODEL	TYPE	VOLTS	SPD.	AMPS	CROSS REF.	FIG.	NOTES
A087	PSC	115/230	1	2.8/1.1	Air Plus 7062-4087, Scherba Industries 7062-3496	A	
A120	SP	120	2	1.1	Aladdin Steel 7002-2983	B	
A129	SP	115	1	1.95	Amana 7021-9064, 7021-9259	C	
A158	PSC	115	1	0.7	Amana 7062-3151	D	
A160	SP	115	1	1.6	Amana 7002-2407	E	
A085	SP	230	1	0.7	AO Smith 464, Johnson Furnace	F	
A155	SP	115			Armstrong 7021-10046	G	
A161	SP	230	1	0.6	Brinkley/ Fedders 8353920103	H	
A088	SP	115	1	1.3	Coleman 7021-6759, Dornback 7021-5478, York 7021-8629, 7021-7105	I	
A128	SP	115	1	0.9	Consolidated Ind. 7021-6376, 7021-9404	J	
A156	SP	115	1	1.4	Evcon 7021-8935	K	
A100	SP	115	1	1.5	Excel Comfort 7058-0280	K	
A159	SP	230	1	0.5	Fedders 11-7096, AK4K84BX	K	
B23617	SP	115/230	1	.9/.4	Franklin 80270	L	
B23618	SP	115/230	1	.9/.4	Franklin 80270	M	
A110	SP	115	1	.90/.80	Frymaster 7002-3512	M	
A111	SP	208-230	1	0.8	Frymaster 7021-11714	M	



FIG. A A087



FIG. B A120



FIG. C A129



FIG. D A158

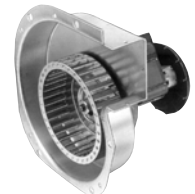


FIG. E A160



FIG. F A085



FIG. G A155



FIG. H A161



FIG. I A088



FIG. J A128



FIG. K A156, A100, A159



FIG. L B23617



FIG. M B23618, A110, A111

*Thermally protected • UL recognized • CSA or ULc certified*  
**NOTE:** Rotation is determined by looking at shaft end. Shaft length is measured from motor face.



FASCO MODEL	TYPE	VOLTS	RPM	SPD.	AMPS	CROSS REF.	FIG.	NOTES
A065	SP	115		1	1.22	Goodman 0131M00002P, 110276-00	A	
A140	SP	115	3400	1	1.4	Goodman 7021-9087, 7021-9000	B	
A157	SP	115	3000	1	7.3	Goodman 7002-2307	C	
A162	SP	208 - 230	3000	1	0.5	Goodman 7021-8656	D	
A180	SP	115		1	1.8	Goodman 7021-9625, 20190601	E	
A181	SP	115		1	1.5	Goodman 7058-0136, 20044403	E	
A182	SP	115		1	1.3	Goodman 7002-3036, B4059000	E	
A184	SP	115		1	1.55	Goodman 7058-0229, B40590-01	E	
A185	SP	115		1	1.15	Goodman 7021-9316, 105854-04	F	
A187	SP	208-230		1	0.8	Goodman 7021-10006, 20028901	F	
A188	SP	115		1	1.6	Goodman 7021-10958, B4833000	F	
A189	SP	115		1	1.5	Goodman 7021-7302, D9868620	F	
A280	SP	115		1	1.5	Goodman 7021-7794, D986868	G	
A281	SP	115		1	0.9	Goodman 7021-8252, D6996405	G	
A282	SP	220		1	0.45	Goodman 7021-8448, B1859050S	G	
A283	SP	115		1	1.5	Goodman 7021-8730, D9868617	G	
A284	SP	208/240		1	0.59/0.50	Goodman 7021-9227, D9886202	G	
A285	SP	115		2	1.4	Goodman 7021-9236, B2833002	G	
A286	SP	208/230		1	0.6	Goodman 7021-9398, 11096904	F	
A287	SP	115		1	1.15	Goodman 7021-9655, 10585405	F	
A288	SP	115		2	1.4/0.65	Goodman 7021-9727, 11177202	F	
A289	SP	208/230		1	0.75	Goodman 7058-0081, 20351402	H	
A290	SP	115		2	0.7	Goodman 7062-5015, 20245903	H	



FIG. A A065



FIG. B A140



FIG. C A157



FIG. D A162



FIG. E A180, A181, A182, A184

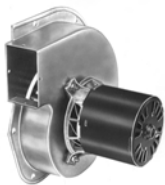


FIG. F A185, A187, A188, A189, A286, A287, A288



FIG. G A280, A281, A282, A283, A284, A285



FIG. H A289, A290



FASCO MODEL	TYPE	VOLTS	RPM	SPD.	AMPS	CROSS REF.	FIG.	NOTES
A133	SP	115	3000	1	1.2	Heat n' Glow 7002-1241	A	
A064	SP	115		1	0.7	Heil Quaker 610172, 7021-5043, 7021-7102	B	
A051	SP	115		1	1.6	ICP 1013833, J238-1393	B	
A067	SP	115		1	2.6	ICP 1014338, 119225-00	B	
A134	SP	115	3060	1	1.5	ICP 7021-9335, 7021-8735, 7021-9499, 7021-8736, 7021-7700	C	
A145	PSC	115	3450	1	0.7	ICP 7062-4061	D	26
A141	SP	115	2800	1	1	ICP 7021-8741, 7021-8742, 7021-9498	E	
A148	SP	208-230	3000	1	0.5	ICP 7021-7617, 7021-9237	F	
A151	SP	230	2800	1	0.3	ICP HQ1050144	G	
A169	SP	230	2800	1	0.75	ICP 7021-10048, 7021-10580	H	
A170	SP	115		1	2.3	ICP 7021-10299, 7021-10702	H	
A171	PSC	115		1	0.7	ICP 7062-4783, 1011412, 7062-4705, 7062-4274, 7062-4201, 7062-4549	H	
A172	SP	115		1	1.6	ICP 7002-2792, 1010975P, 7002-2633	H	
A173	PSC	115		1	0.8	ICP 1011350, Alltemp (Rotom)7062-4578, 7062-4832	I	
A174	SP	115		1	0.8	ICP 7021-9188, 1010239	I	
A175	SP	115		1	1	ICP 7002-1891, 1708-600P	I	
A176	SP	115		1	2.2	ICP 7002-2946, 1011899, 7002-3071	I	
A177	SP	115		2	1.4	ICP 7021-10363, 1011632, 7021-10597	I	
A178	SP	115		1	1.8	ICP 7021-10928, 10113388FA	I	
A179	SP	115		1	0.9	ICP 7021-8693, 1006168P	I	
A301	SP	115		1	0.8	ICP 7021-9498, 1010239P	I	
A302	SP	115		1	1.5	ICP 7021-9499, 1010324P, 7021-7700, 1708-607	I	
A304	SP	115		1	1.5	ICP 7021-9701, 1011021	I	
A306	PSC	208-230		2	0.3	ICP 7062-4532, 1097245	I	
A307	PSC	115		1	0.7	ICP 7062-5165	I	

NOTES: 26: 4M 250V Capacitor included



FIG. A A133



FIG. B A064, A051, A067



FIG. C A134



FIG. D A145



FIG. E A141



FIG. F A148



FIG. G A151



FIG. H A169, A170, A171, A172



FIG. I A173, A174, A175, A176, A177, A178, A179, A301, A302, A304, A306, A307

Thermally protected • UL recognized • CSA or ULc certified

NOTE: Rotation is determined by looking at shaft end. Shaft length is measured from motor face.



FASCO MODEL	TYPE	VOLTS	SPD.	AMPS	CROSS REF.	FIG.	NOTES
A068	SP	120	1	1.15	Lennox 88K8401, J238-8171	A	
A135	SP	120	1	0.7	Lennox 7021-8812, 7021-8819	B	
A138	SP	120	1	0.7	Lennox 7021-8657, 7021-8825	C	
A163	SP	115	1	1.8	Lennox 7021-9450	D	
A164	SP	120	1	0.8	Lennox 7021-9593	E	
A200	SP	115	1	1.95	Lennox 7002-2975	E	
A201	SP	208-230	1	0.65	Lennox 7021-10055, 7021-10743	E	
A202	SP	115	1	1.8	Lennox 7021-10602, 7021-11106, 7021-11174	E	
A203	SP	115	1	1.8	Lennox 7021-10841	E	
A204	SP	115	1	1.8	Lennox 7021-11406	E	
A205	SP	120	1	0.7	Lennox 7021-8372, 7021-9001	E	
A206	SP	115	1	1.5	Lennox 7021-8473, 7021-8983	E	
A207	SP	115	1	1.75	Lennox 7058-0217	E	
A208	SP	115	1	1.75	Lennox 7058-0322	E	
A209	PSC	115	2	0.8	Lennox 7062-5441	E	
A210	SP	115	2	1.7	Lennox 7021-11063	E	
A211	SP	115	1	2.35	Lennox 7021-11634	E	
A213	SP	115	2	2.1	Lennox 7021-10376, 18L0401	E	
A216	SP	115	2	2.1	Lennox 7021-10915, 60L1401	E	
A217	SP	230	1	0.8	Lennox 7021-11231, 25M5501	E	



FIG. A A068



FIG. B A135



FIG. C A138



FIG. D A163



FIG. E A164, A200, A201, A202, A203, A204, A205, A206, A207, A208, A209, A210, A211, A213, A216, A217



FASCO MODEL	TYPE	VOLTS	SPD.	AMPS	CROSS REF.	FIG.	NOTES
A218	SP	220-240	1	.60/.52	Lennox 7021-10676, 39L4201, 7021-8959, 60J4201	A	
A219	SP	120	1	0.7	Lennox 7021-9262, 88J3901	A	
A320	SP	115	1	0.8	Lennox 7021-9646, 101154-01 7021-9466	A	
A322	SP	120	2	1.1	Lennox 7021-9884, 83L8201	A	
A324	PSC	230	1	0.44	Lennox 7062-1909, 28G6601, 7062-1794	A	
A325	PSC	208-230	1	0.6	Lennox 7062-2845, 7062-4751, 98G8701	A	
A329	PSC	208-230	1	0.5	Lennox 7062-4819, 19L1501	A	
A330	PSC	208-230	1	0.55	Lennox 7062-5546, 7062-4517, 7062-4608, 7062-4083, 69M3301	A	
A331	PSC	460	1	.38/.33	Lennox 7062-5554, 69M3201, 7062-4051, 7062-4518, 97J8101	A	
A081	SP	230	1	0.5	Magic Chef/HWC Series 48HWC24A, 48HWC181, 35HWC181, 60HW, 60HWCC24A, 60HWC181, 48HW, 60HWC30A, 66HWC18A, 36HWC241, 66HW, 60HWC241, 66HWC181, 66HWC241, 60HWC301, 48HWC241, 66HWC301, 48HWC18A, 60HWC18A, 36HWC18A, 66HWC24A, 36HW, 36HWC24A	B	
A131	SP	115	1	1.1	Nordyne 7021-9132, 7021-10171, 7021-10159, 7021-9661	C	
A132	SP	115	1	1.1	Nordyne 7021-7975, 6212850	D	
A121	SP	240	1	0.51	Nordyne 7021-10381, 6217930	D	
A122	SP	115	1	1.75	Nordyne 7021-11227, 6219490	D	
A123	SP	115	1	1.95	Nordyne 7021-11385, 622064	D	
A124	SP	115	1	1.75	Nordyne 7021-11379, 6219290	D	
A126	SP	115	1	1.8	Nordyne 7002-3158, 6219500	D	
A079	SP	115	1	1.1	Rheem Ruud 74-70-21496-03-01, 74-70-21504-03-04, Goodman B1859000, 7021-6804, JA1M106, JA1M137, Trane B1W24, WG94X167	E	
A090	SP	115	1	1.1	70-21496-01, 7021-5239, JA1M102, 7021-5715	F	



FIG. A A218, A219, A320, A322, A324, A325, A329, A330,



FIG. B A081

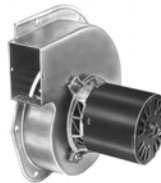


FIG. C A131



FIG. D A132, A121, A122, A123, A124, A126



FIG. E A079



FIG. F A090

Thermally protected • UL recognized • CSA or ULc certified  
**NOTE:** Rotation is determined by looking at shaft end. Shaft length is measured from motor face.



FASCO MODEL	TYPE	VOLTS	SPD.	AMPS	CROSS REF.	FIG.	NOTES
A136	PSC	115	1	0.75	Rheem 7062-3861	A	
A139	SP	115	1	0.95	Rheem 7021-7577	B	
A086	SP	115	1	1.3	Rheem JA1N065, 7021-5239, JA1N062, Universal JA1N069, 20th Century, 7021-5853, 7021-7104	C	
A142	PSC	115	1	0.7	Rheem 7062-1881, 7062-2615, PMI/Vulcan Hart 7062-2513, 416673-00003	D	
A066	SP	120	1	1.27	Rheem 70-24157-03, 117847-00	E	
A240	SP	115	1	1.1	Rheem 7021-8183	F	
A241	SP	208-230	1	0.62	Rheem 7021-9567	G	
A242	SP	115	1	1.36	Rheem 7021-7150	H	
A243	SP	115	1	1.36	Rheem 7021-7790	I	
A244	SP	208-230	1	0.85	Rheem 7021-6967	J	
A245	SP	208-230	1	.95/.85	Rheem 7021-7490	K	
A246	PSC	115	2	0.85	Rheem 7062-3925S, 7062-5272	L	
A247	PSC	115	2	0.95	Rheem 7062-5519S	M	
A251	SP	208-230	1	1.1	Skymark 7021-9136	M	
A073	SP	115-230	1	.8/.5	Tappan, Janitrol, SJC, Arkla, Franklin 8251560133, 829932, 8351520243	N	
A143	S	115	1	0.95	Trane 7021-8428, 7021-8013, 7021-8924, 7021-9639, 7021-9055, Jakel J238-138-1344	O	
A146	SP	115	2	1 - .35	Trane 7021-7986, 7002-2531, 7021-8925	P	
A069	SP	208-240	1	0.5	Trane 38040252, 82252, 7021-6682	P	
A075	SP	230	1	0.4	Trane 38050005, 7021-6681, Franklin 82005	Q	



FIG. A **A136**



FIG. B **A139**



FIG. C **A086**



FIG. D **A142**



FIG. E **A066**



FIG. F **A240**



FIG. G **A241**



FIG. H **A242**



FIG. I **A243**



FIG. J **A244**



FIG. K **A245**



FIG. L **A246**



FIG. M **A247, A251**



FIG. N **A073**



FIG. O **A143**



FIG. P **A146, A069**



FIG. Q **A075**



FASCO MODEL	TYPE	VOLTS	SPD.	AMPS	CROSS REF.	FIG.	NOTES
A130	PSC	115	1	0.7	Trane 7062-3956, 7021-4004, 7062-5247, 7062-3616, Nordyne 7062-4159, 7062-4639	A	
A150	SP	208-230	1	0.5	Trane 7021-7833, 7021-8928	B	
A191	SP	208-230	1	0.8	Trane 7021-6683	B	
A192	SP	115	1	1	Trane 7021-8569	B	
A193	SP	208-240	1	.59/.5	Trane 7021-8591	B	
A194	SP	115	2	1.0/.5	Trane 7021-9561	B	
A195	SP	115	1	1.75	Trane 7021-11543S, 7021-11543	B	
A196	SP	115	1	1.35	Trane 7021-11544S, 7021-11544, 7021-9065	B	
A197	3 PHASE	33-110	VAR.	1.0	Trane 7092-0238S, 7092-0238	C	
A198	SP	115	1	1.75	Trane 7058-0259	C	
A199	SP	115	1	1.75	Trane 7058-0260	C	
A260	SP	115	1	1	Trane 7058-0261	C	
A261	SP	115	1	1	Trane 7058-0262	C	
A262	SP	115	1	1	Trane 7058-0263	C	
A263	SP	115	1	1	Trane 7058-0264	C	
A264	SP	115	2	0.75	Trane 7002-3443	C	
A265	SP	115	2	0.75	Trane 7002-3444	C	
A266	SP	115	2	1	Trane 7002-3445	C	
A267	SP	115	2	1.4	Trane 7002-3446	C	
A268	SP	115	2	1.4	Trane 7002-3447	C	
A269	SP	208-230	1	0.58-0.60	Trane 7021-11054	C	
A270	PSC	208-230	2	.42-.50	Trane 7062-5033	C	
A271	PSC	208-230	2	0.62	Trane 7062-3969	C	



FIG. A A130



FIG. B A150, A191, A192, A193, A194, A195, A196



FIG. C A197, A198, A199, A260, A261, A262, A263, A264, A265, A266, A267, A268, A269, A270, A271

Thermally protected • UL recognized • CSA or ULc certified  
**NOTE:** Rotation is determined by looking at shaft end. Shaft length is measured from motor face.



FASCO MODEL	TYPE	VOLTS	SPD.	AMPS	CROSS REF.	FIG.	NOTES
A272	PSC	208-230	2	0.65	Trane 7062-3971	A	
A273	PSC	208-230	2	0.62	Trane 7062-3972	A	
A274	PSC	208-230	1	0.28	Trane 7062-3973	A	
A276	SP	115	1	1	Trane 7021-9011	A	
A278	SP	115	2	1.4	Trane 7002-2530	A	
A279	SP	115	2	0.75	Trane 7002-2531	A	
A360	SP	115	2	1	Trane 7002-2532	A	
A361	SP	115	1	1.6	Trane 7002-2558	A	
A362	SP	115	1	1.6	Trane 7002-3273	A	
A367	SP	115	2	0.95	Trane 7021-8051	A	
A368	PSC	115	2	0.8	Trane 7062-3782	A	
A369	PSC	208-230	2	0.34	Trane 7062-3915	A	
A370	PSC	208-230	2	0.18	Trane 7062-3918	A	
A373	SP	208-230	1	0.6	Trane 7021-9396	A	
A118	SP	115	1	1.8	Williamson 7021-6999, 7021-7042	A	
A080	SP	115	1	1.1	Williamson 7021-5510, 02-568, Franklin F3670-1, Rotron RFB6	B	
A063	SP	230	1	0.6	York 026-22239-700, 7021-4314	B	
A083	SP	230	1	0.8	York 026-16323-0000, 02620224-000, 7021-1373	B	
A137	PSC	115	1	0.7	York 7062-2442, 7062-3484, 024-25057-000	C	
A144	SP	208-230	1	0.5	York 7021-6770	D	41
A154	SP	115	1	1.2	York 7021-9428	E	

NOTES: 41: Includes centrifugal switch

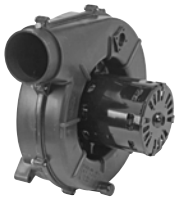


FIG. A A272, A273, A274, A276, A278, A279, A360, A361, A362, A367, A368, A369, A370, A373, A118



FIG. B A080, A063, A083



FIG. C A137



FIG. D A144



FIG. E A154





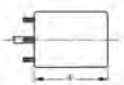
FASCO MODEL	TYPE	VOLTS	SPD.	AMPS	CROSS REF.	FIG.	NOTES
A165	PSC	115	1	0.7	York 7062-3958	A	
A168	PSC	115	1	0.7	York, Excel, Ducane 7062-5019	B	
A220	SP	115	1	1.6	York 7021-5838, 026-27510-700, 7021-7217, 7021-9054	B	
A221	SP	208-230	1	0.55	York 7021-8318, 026-30614-700, 7021-6691	B	
A222	SP	115	1	1.05	York 7021-8317, 026-32067-700, 7021-7481	B	
A223	SP	208-230	1	0.64	York 7021-10096, 026-33999-001, 7021-9656	B	
A224	SP	115	2	0.8	York 7062-5048, 024-27654-000, 7062-4743	B	
A225	SP	115	1	2.25	York 7021-11577, 17503, 7021-11577S, 7021-11830	B	
A226	SP	115	1	1.7	York 7058-0266, 7058-0266S	B	
A227	SP	115	1	0.7	York 7062-4708S, 024-27641-000, 17450, 7062-4708	B	
A228	SP	115	1	2	York 7002-3285, 024-31957-000, 7002-2941	B	
A229	SP	115	1	1.75	York 7058-0267S, 17499, 7058-0267	B	
A230	PSC	115	2	0.8	York 7062-5094S, 17476, 7062-5094	B	
A231	SP	115	2	1.3	York 7021-10213, 17452	B	
A234	PSC	208-230	1	0.5	York 7062-5155, 102529	B	



FIG. A A165



FIG. B A168, A220, A221, A222, A223, A224, A225, A226, A227, A228, A229, A230, A231, A234



Thermally protected • UL recognized • CSA or ULc certified  
**NOTE:** Rotation is determined by looking at shaft end. Shaft length is measured from motor face.